

BROCHURE



WOODSIDE JOINERY

BESPOKE STAIRCASE SPECIALISTS

Established 1973

Woodside
Joinery

Table of CONTENTS

| | |
|----|--------------------------|
| 01 | Our Story |
| 02 | Closed String Staircases |
| 03 | Cut String Staircases |
| 04 | Open Rise Staircases |
| 05 | Spiral Staircases |
| 06 | Spine Staircases |
| 07 | Bolzen Staircases |
| 08 | Cantilever Staircases |
| 09 | Our Process |
| 10 | Meet Our Team |



Our STORY



Woodside Joinery is a family business that has a long tradition specialising in the creation of high quality bespoke staircases and staircase furniture.

For over 40 years, we have designed, handcrafted and fitted bespoke stairs across the UK; combining knowledge, skill and passion to create staircases that are not only functional, but become a statement piece and focal point of the home.

To complement these stairs we also provide a complete joinery service which includes the supply of internal doors, door linings, architraves, skirting and under-stairs storage. All of these are available in a number of finishes for a tailor made, truly stylish approach to home design.

When deciding on a staircase the options are endless, and our designers will work with you to create the perfect staircase to complement your own individuality and your home.

Staircases styles can be divided into seven basic categories with more information on these throughout this brochure. The categories are; closed string, cut string, open rise, spine, bolzen, cantilever and spiral.

Whether curved, straight or winding, all of our staircase designs will fit into one of these seven categories.

We can help you to design and deliver the perfect staircase for your home.

Your bespoke staircase specialists

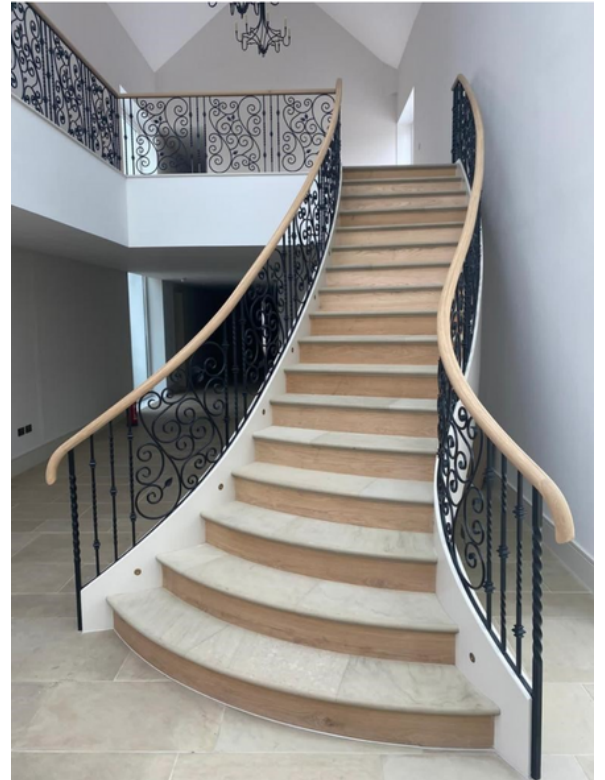
CLOSED STRING STAIRCASES

From traditional to contemporary, a complete all-rounder

A popular and classic style of staircase is the closed string. We produce closed string staircases in a variety of shapes, colours and sizes. As such, these stairs can make a dramatic statement in your home.

The term "closed string" simply refers to the way the steps finish into the side of the stair. On this style you will see a flat board against the stair as opposed to just the profile of the steps.

From classic to grand, this style suits every space.



CUT STRING STAIRS

A popular and classic style for any home

Acting as the opposite to the Closed String, the Cut String Staircase is a typical example of how a small visual change makes a striking difference to the overall image of the staircase.



Here you will be able to see the profile of the steps climbing up the staircase, and as with the Closed String, this can be used in both traditional and contemporary projects for striking effect.



OPEN RISE STAIRCASES

Increase your space and add a new perspective

The Open Rise staircase refers to the upright section of the step - known as the "riser" - being left open. This allows a clear view through the staircase on approach.

Having an open rise can allow light into dark areas and make your space feel larger. It may be used to open the flow through of a house and allow a view through to the features beyond.



SPIRAL STAIRCASES

Eye catching and space saving

The Spiral style is an increasingly popular choice of design.

Spiral stairs have been utilised for decades to fit into spaces where a traditional model may not be suitable; whether that be the middle of a living space, accessing a new mezzanine or an utilising a corner space.

Both practical and visually striking, they add a sense of flair to the space they inhabit and become a feature in themselves.



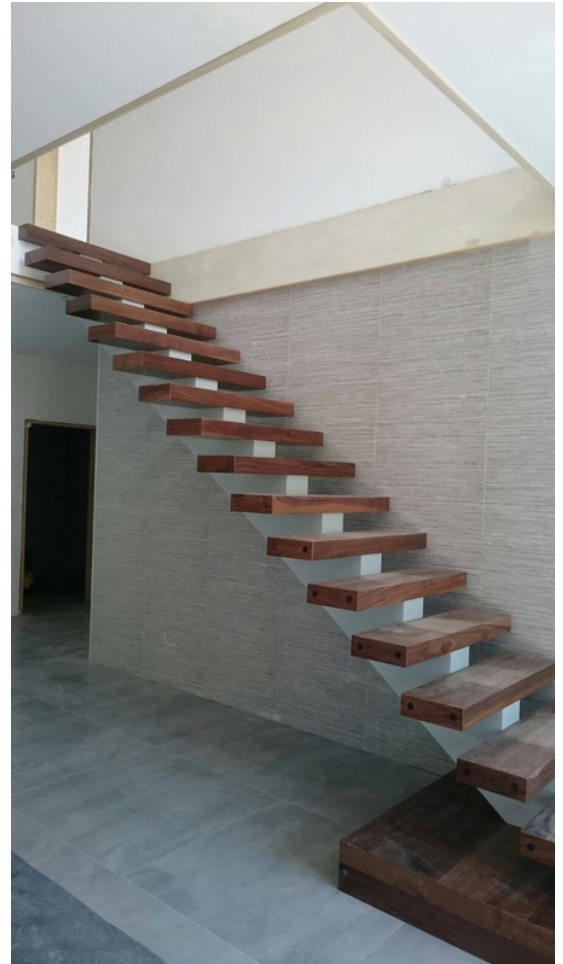
SPINE STAIRCASES

Unique and striking to make a statement

Quickly becoming a modern favourite, the Spine staircase style takes a step away from more traditional designs.

It gets its name from the striking central "spine" which carries the staircase, replacing the traditional "strings" usually found at either side

Spines can be made of metal or timber, curved or straight; but however you imagine your design, a Spine Staircase is sure to make a powerful statement in your home.



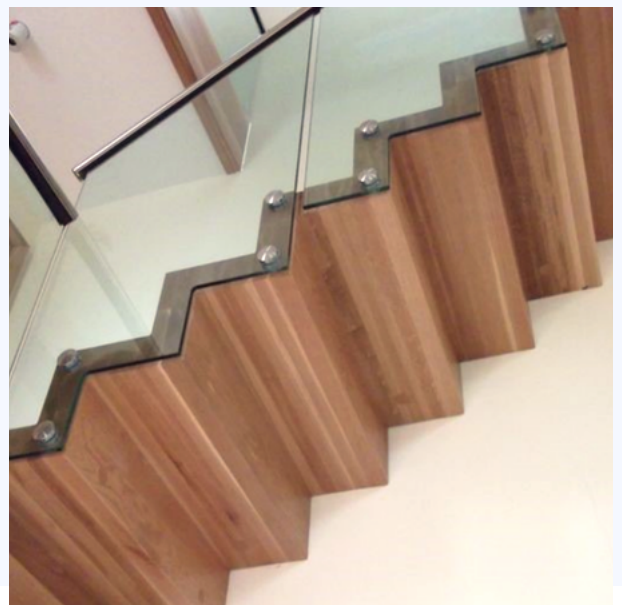
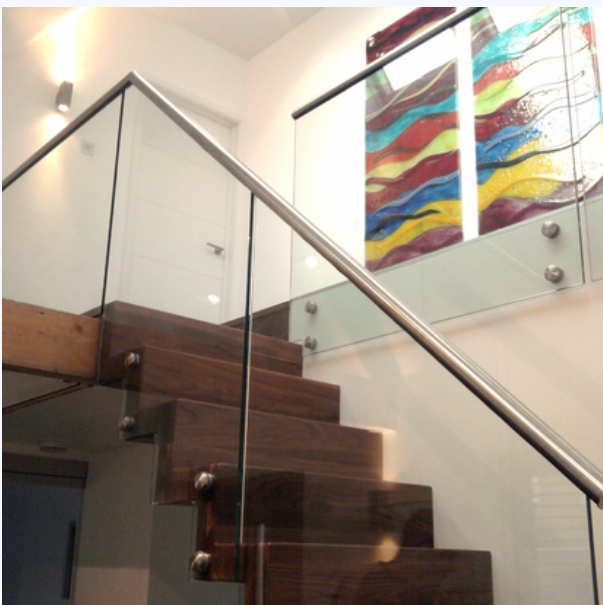
BOLZEN STAIRCASES

Creating flow in your space

A recent addition to our selection of staircase styles is the Bolzen, which is sometimes referred to as the "zig-zag" staircase.

As this name suggests, this staircase will follow the profile of the steps both on the top and bottom. Unlike the cut string however, where the steps and string are clearly defined separate components, this is all manufactured as one continuous "chunky" structure flowing upwards.

The hard corners and continuous design of the Bolzen style set it apart from all other staircases and fits excellently into more contemporary properties.



CANTILEVER STAIRCASES



Adding some magic to your home

The Cantilever is known as a "floating" staircase due to its weightless appearance.

It gets its name from the method through which the style is achieved. A steel frame is fitted to the walls of the property prior to any plaster or decoration being carried out which will have a series of steel arms cantilevered out into the room.

Once the aesthetic work has been finished, these arms will then get timber sleeves put around them thus creating the illusion of floating steps.

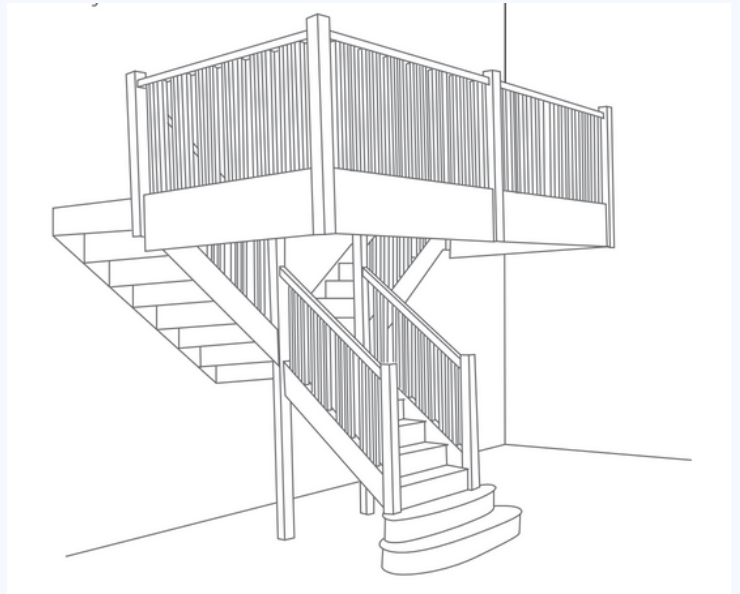
This method of staircase installation takes more preparation and foresight during the construction of the building, however this extra works creates a final effect which looks almost effortless.

PERSONALISATION

Adding your own flair

Let our team create the staircase of your imagination.

Our specialists will work with you to bring your vision to life through the construction of detailed 3D designs. We will ensure your input and feedback throughout the design process and allow you to visualise your staircase before manufacture takes place.



This dedication and attention to detail continues right through the process and we will work with you every step of the way, from the moment of inception to the final paint or polish, to ensure that the final product you end up with is exactly what you dreamed of. After all, when designing your home you want features of character, and what better architectural feature than a tailor made and personalised staircase as the focal point of your property.

Read more about how we can work together in our separate '[Your Journey. With Us](#)' document.

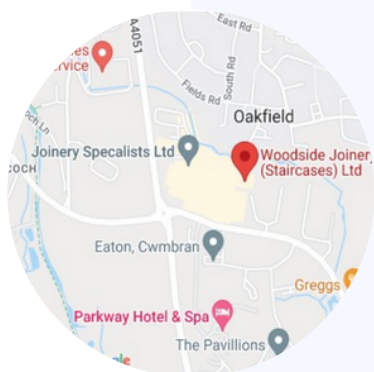
Meet OUR TEAM

Let's work together

In most instances, we are able to create your initial designs and quotations based on pictures, plans and information provided remotely.

However, if you would like to go over your ideas and options in person we would be more than happy to meet you at either the showroom at our head office and manufacturing site in South Wales or our stand at the 'National Self Build and Renovation Centre' in Swindon.

Let us know a suitable time and date and we will be sure to meet you at your preferred location.



Woodside Joinery Showroom

South Wales

Unit 40, Llantarnam Industrial Park, Cwmbran, Torfaen,
NP44 3AX

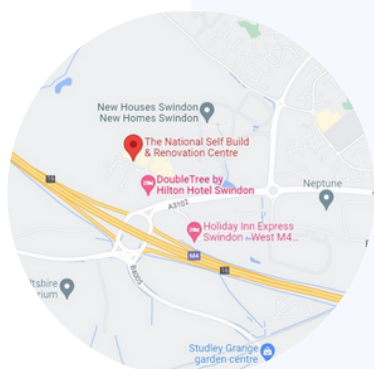
01633 875 232

facebook.com/WoodsideJoinery

sales@woodsidejoinery.com

instagram.com/WoodsideJoinery

www.woodsidejoinery.com



The National Self Build & Renovation Centre

Swindon

Lydiard Fields, Great Western Way, Swindon, Wiltshire,
SN5 8UB



WOODSIDE JOINERY

BESPOKE STAIRCASE SPECIALISTS

Established 1973

Contact Us

Unit 40, Llantarnam Industrial Park, Cwmbran, Torfaen, NP44 3AX

01633 875 232

www.woodsidejoinery.com

sales@woodsidejoinery.com

@WoodsideJoinery

Woodside
Joinery